

A New Milestone within Urban Living

A Scandinavian Living property

S
E
R
V
E
T
Ø





the property

The Property In the idyllic neighborhood of Santa Catalina, the “Servet 8” by “Scandinavian Living” is looking to raise the bar of urban living. With a duplex penthouse offering astonishing views over the harbor as well as the cathedral, it is primed to become one of the top apartments of the area.

“Servet 8” by “Scandinavian Living” offers an array of different apartments, ranging from a cozy and well planned 72 square meter, 2-bedroom apartment, all the way up to the 175 square meter duplex penthouse with a 48 square meter terrace on the roof.

For the green fingered owner, “Servet 8” is also happy to offer a ground level duplex of 123 square meters in a 3-bedroom layout and 50 square meter private garden with a lovely pool and relaxation area.

Each apartment will offer the high quality finishing and design which is synonymous with the “Scandinavian Living” trademark, however, should you put down your reservation for this completely newly refurbished building, you can always have the added possibility of affecting your material choices and designs.

Furthermore “Scandinavian Living” is proud to be working with some of the finest interior designers and furniture companies to ensure that we can create a home specifically for your wants and needs.



the space

APARTMENT	LIVING AREA	TERRACE and/or GARDEN
• Ground Floor Duplex	123 m ²	55 m ²
• Apartment 2	72 m ²	5 m ²
• Apartment 3	114 m ²	10 m ²
• Penthouse Duplex	150 m ²	48 m ²



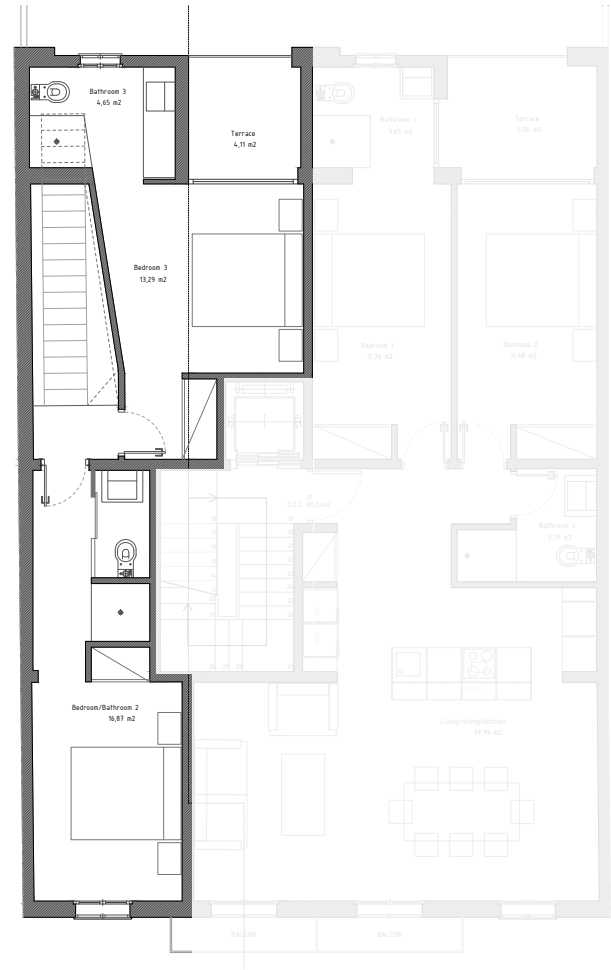
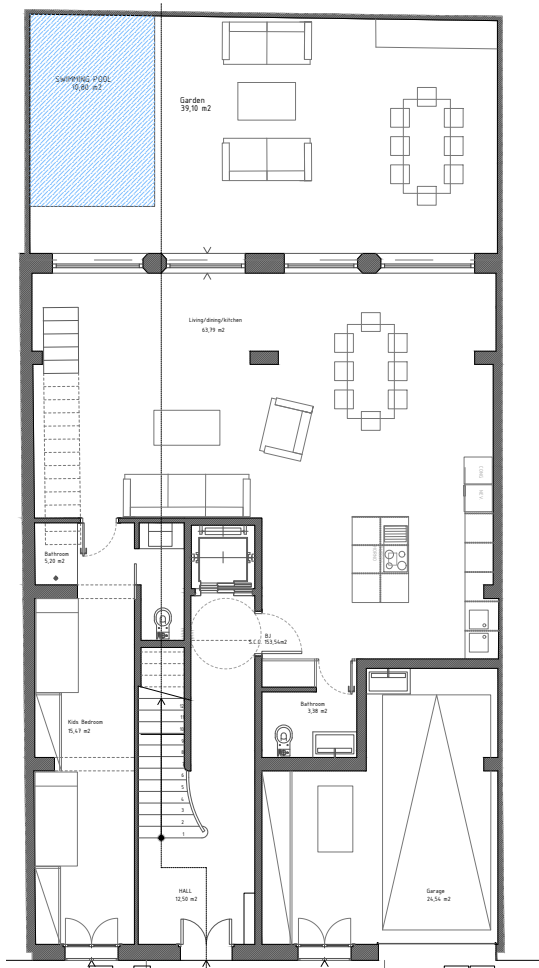




ground floor

D
U
P
L
E
X

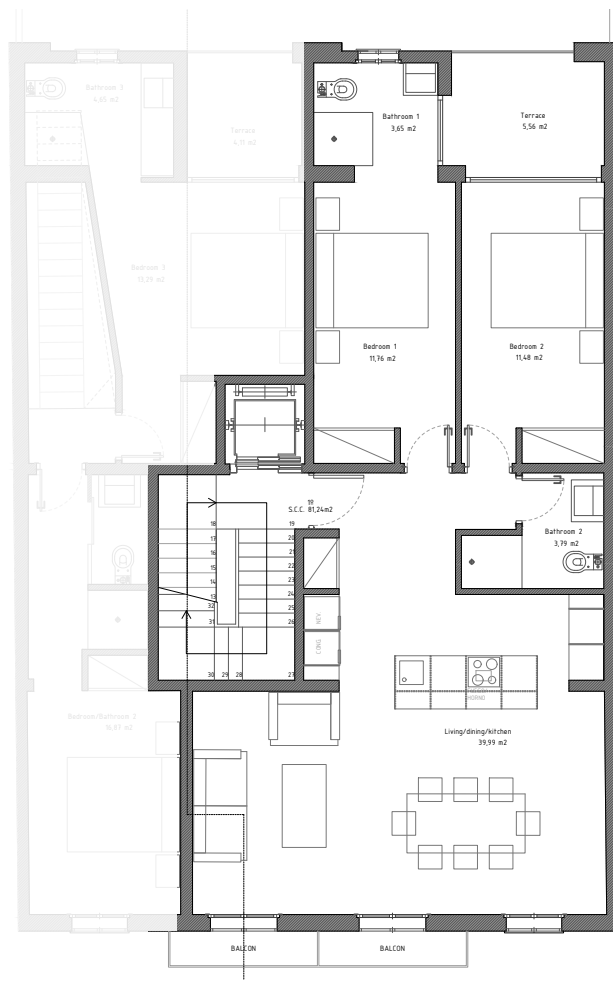
- Private garden and pool
- 2 bedrooms
- 1 child bedroom
- 3 bathrooms
- Large living room & common area opening up to the private garden



2nd floor

A P A R T M E N T

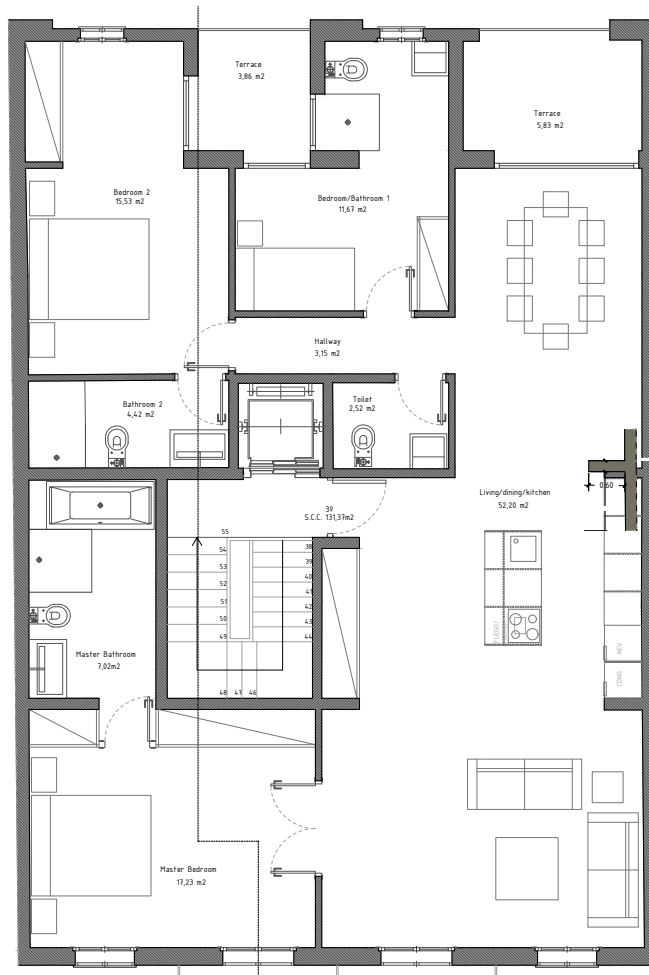
- 2 bedrooms, 2 bathrooms
- Spacious living room and open kitchen solution
- Terrace adjoining to the bedrooms



3rd floor

A P A R T M E N T

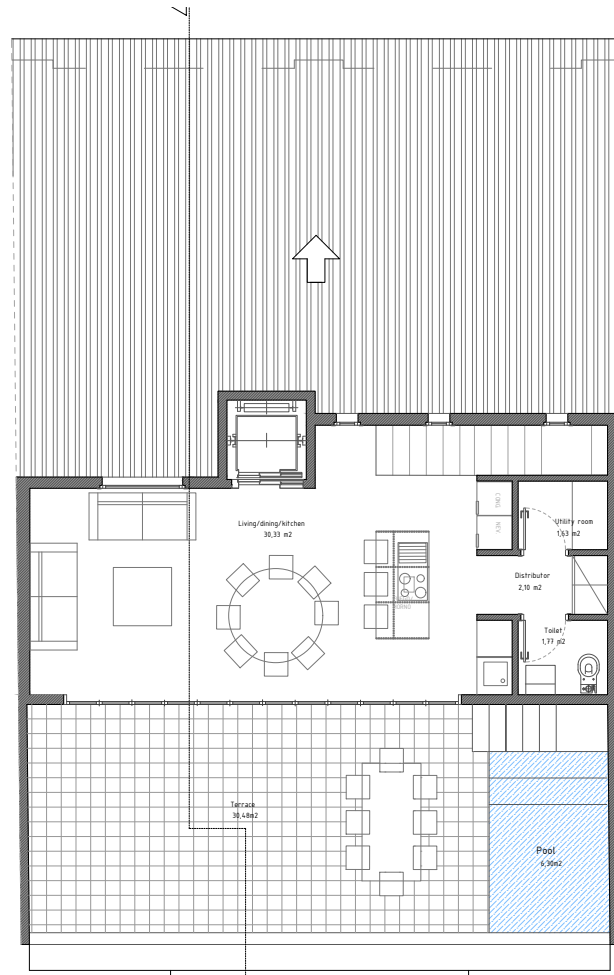
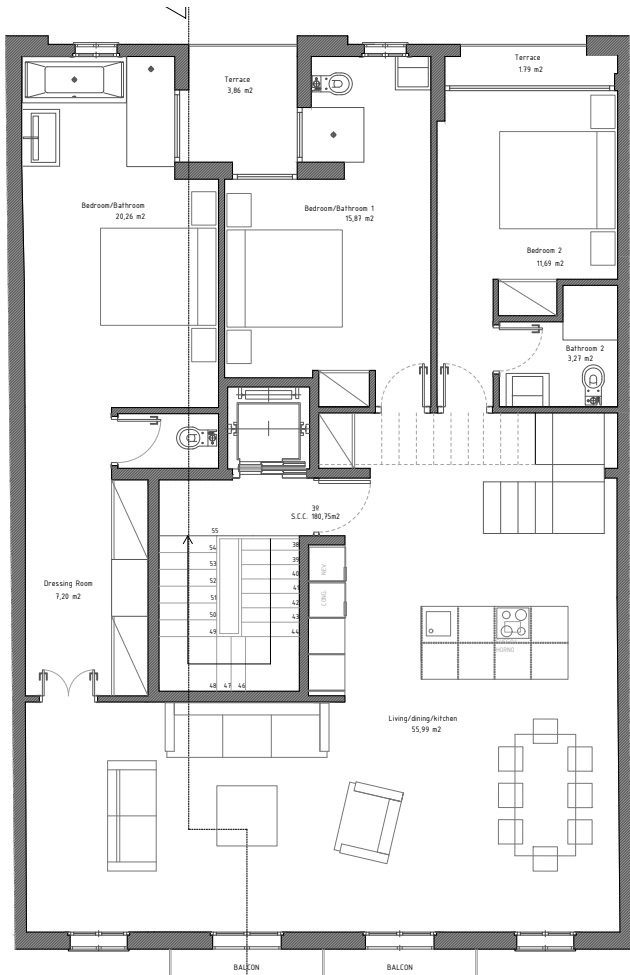
- 3 bedrooms, 3 bathrooms
- 2 terraces connected to the bedrooms
- Spacious living room and open kitchen solution
- Walk-in dressing area for master bed



penthouse

D U P L E X

- 3 bedrooms
- 3 bathrooms
- 1 guest WC
- 2 kitchens and 2 living-rooms
- Rooftop terrace with sea views and cathedral views
- Private rooftop pool
- Elevator opens straight in to apartment
- Private garage







For more information please contact us

mail@scandinavianliving.com
+34 663 927 531

www.ScandinavianLiving.com

PALMA MARKETS



REAL ESTATE • INTERIOR • PROJECTS

info@palmamarkets.com